

GAMLABIÓ



GAMLABIÓ – EVENT HOUSE The historical building is located in the heart of Reykjavik, built as Cinema and opened in 1926, by Danish gentlemen, Peter Petersen. Mr. Petersen had his own apartment on the top, which was known as the “Petersen - suite”.

Apart from films, that were shown regularly, there were concerts and other events in “Gamlabíó” from the start. Mainly used as cinema till 1981, when it became “The Icelandic Opera” and was till 2011, when it moved to the Concert Hall “Harpa”, down by Reykjavík harbour.

The Gamlabíó was renovated in late 2014 and the building has new live. However, it is still with the same dignity as before. The building has been totally renovated, but kept in the same architecture but updated today's requirements and regulations.

Now Gamlabíó have a beautiful historical building with multifunctional purpose, where it is possible to have all kinds of events like concerts, gala dinners, weddings, conferences etc.



The facilities:

The Lobby (the old ticket sale/entrance) takes up to 250 persons standing reception

The main hall (cinema hall)

* Cinema hall: sloping theater/conference seats 190 seats

* Standing: 550 pax with stage 13x6m

* Round tables: up to 200 pax on round tables with small stage 13x2m

* Long tables: up to 220 pax on long tables with small stage 13x2m

Up on the balcony (main hall)

* Cinema hall: sloping theater/conference seats 127 seats

* Standing: up to 200 pax standing

* Round tables/long tables: up to 80-100 pax seated on round- or long tables

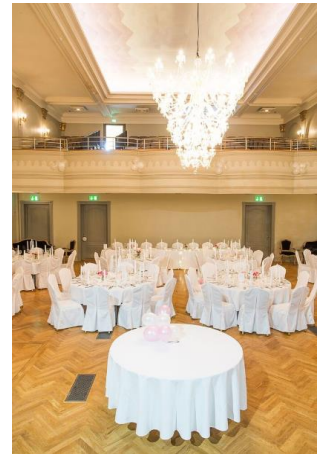
Main hall downstairs and up on balcony total:

* Standing: 750 persons

* Sloping theater/conference: 317 seats

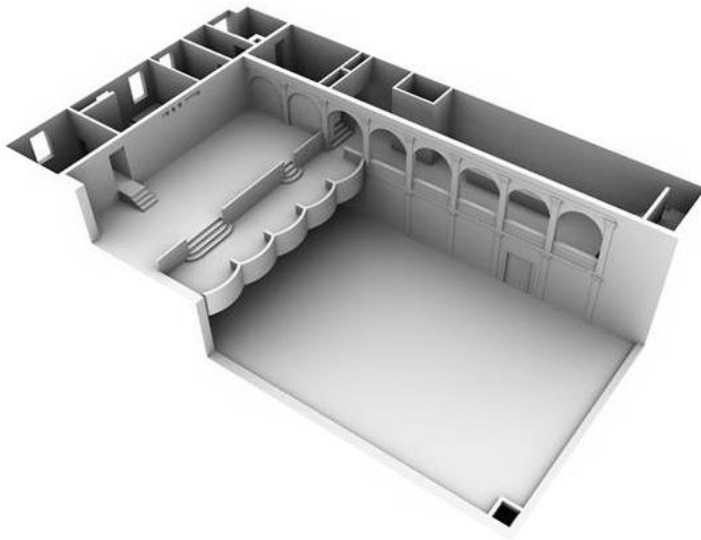
* Dining by round/long tables: 300 seats



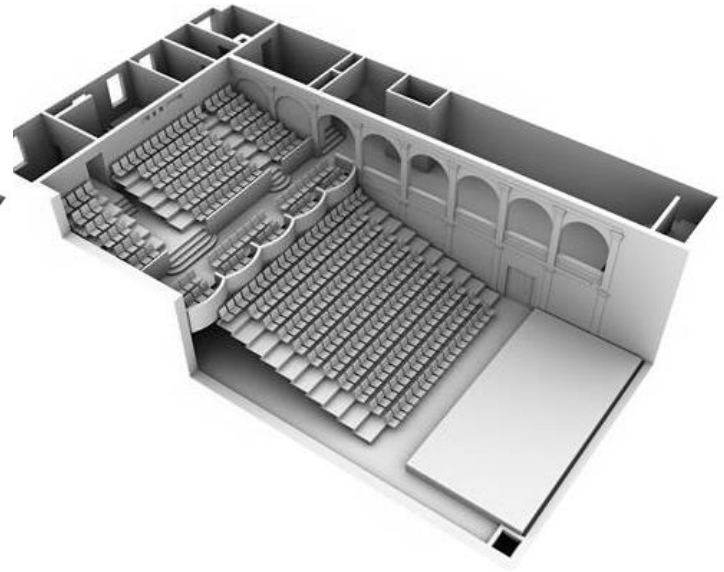


Floor plan of Gamlabió:

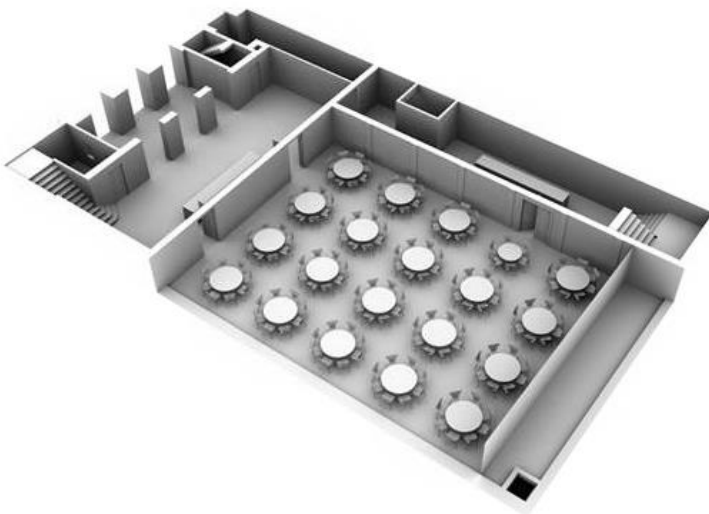
The Main hall: 1st and 2nd floor + stage



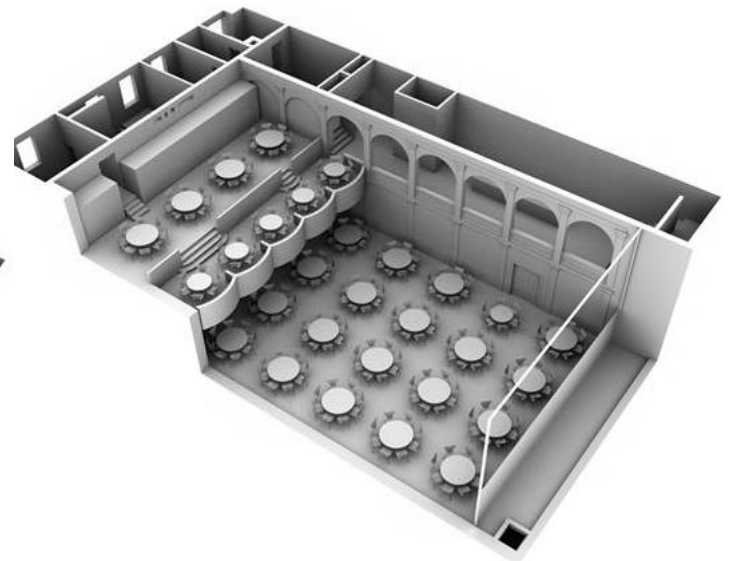
The theater/conference seats: 1st and 2nd floor + stage



The main hall – Dinner set-up round tables: 1st floor



The main hall – set-up round tables: 1st+ 2nd floor



The main hall – Conference set-up long tables: 1st+ sloping theater 2nd floor

