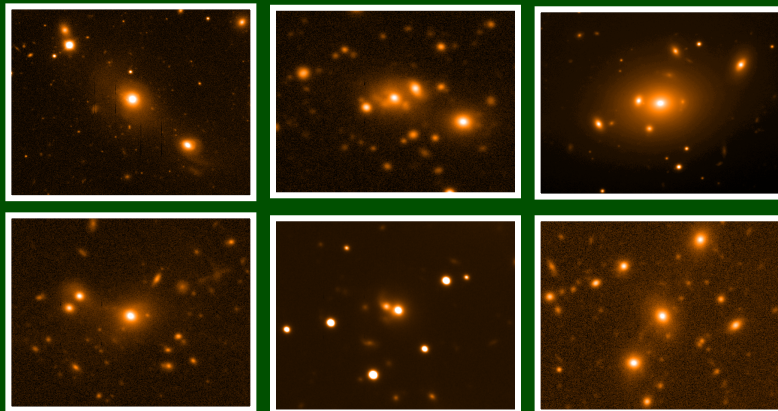




Are luminous radio-loud AGN triggered by galaxy interactions?



Ramos Almeida et al. - submitted to MNRAS – Poster 6.17

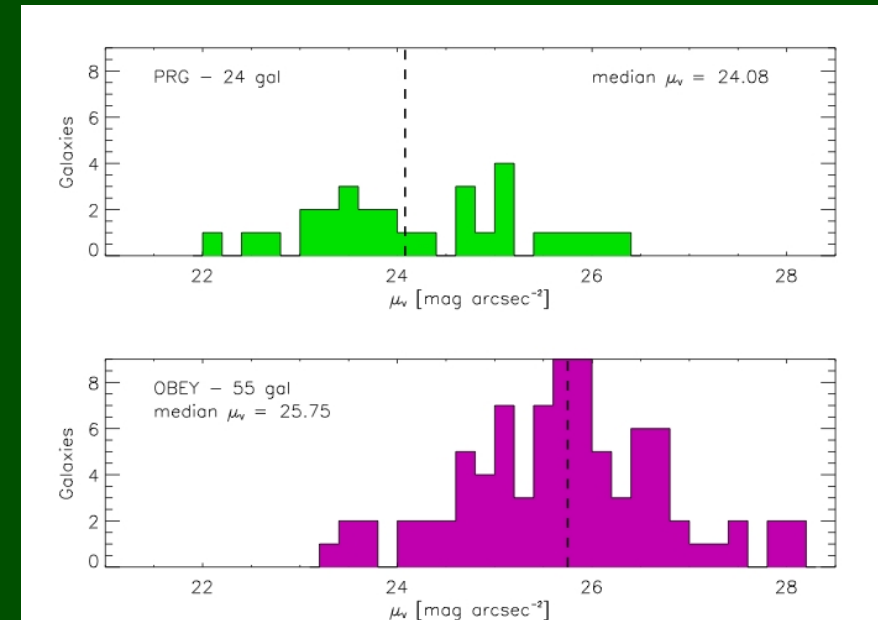


94% of a complete sample of 2Jy SLRGs show signs of morphological disturbance (Ramos Almeida et al. 2011, MNRAS, 410, 1550).

35% observed after first peri-center passage but before the final coalescence of the merging nuclei.

If interactions play a role in the triggering of PRG, that can happen at any stage of the interaction.

OBEY survey (Tal et al. 2009)	EGS sample (Rainbow; Barro et al. 2011)
$z \leq 0.01$	$z = [0.2, 0.7]$
55 elliptical galaxies	107 early-type galaxies
$M_B = [-22.5, -20.4]$ mag	$M_B = [-22.2, -20.6]$ mag
53% interactions	48% interactions



Cristina Ramos Almeida, P. Bessiere, C. Tadhunter, P. G. Pérez-González, G. Barro, K. Inskip, R. Morganti, J. Holt & D. Dicken